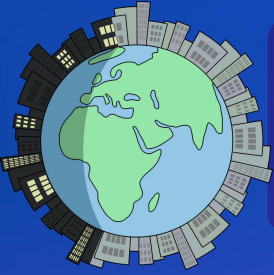


# Inclusive, Sustainable, Safe and Resilient Cities

## Affordable Housing



### Over 50% of the Population Lives in Urban Areas

The number of residents living in urban areas is projected to increase to approximately 70% by 2050. To complete SDG 11 by 2030, access to safe and affordable housing is essential.

### Current Housing Solutions

Brasilia and the City of Miami currently have housing programs in place for low-income families to have access to affordable housing. However, even with these programs there are still many residents in need.



### Other Solutions to Consider

By using public land and revising building codes in the City of Miami and Brasilia, these two cities would be one step closer to ensuring SDG 11 is met, as well as benefiting a countless number of residents.



### Public Land

The City of Miami has 50 publicly owned parcels of land that could be used to construct affordable housing options. The Brazilian government plans to retrofit vacant buildings and plots of land into affordable housing by the end of 2022.



### Building Codes

With a revision of building codes in the City of Miami and Brasilia, existing homeowners could construct secondary living locations on their property and rent them out to residents to provide more safe and affordable housing, while generating a secondary income for the homeowners.



### Goal

To effectively reach SDG 11 by 2030 the City of Miami and Brasilia should consider using publicly owned land to build affordable housing and revisit building codes.

